



**CHUAN
PARK**
RESIDENCES

Garden Home of the City

Chuan Park Residences, where nature meets luxury. Immerse yourself in a tranquil sanctuary, where nature's symphony unfolds. Indulge yourself in this perfect blend of elegance and outdoor charm at Chuan Park Residences.

Chuan Park Residences is developed by Kingsford Development & MCC Land (Singapore). With a proven track record for mega developments, the duo has an extensive portfolio of various local and overseas residential developments.

Disclaimer: All images and floor plans are for illustration purposes only, and are subject to final changes by the developer.



* Artist Impression



* Artist Impression

New Beginning

Disclaimer: All images and floor plans are for illustration purposes only, and are subject to final changes by the developer.



* Artist Impression

Chuan Park Residences is a 99-year leasehold development in Lorong Chuan area, next to the Lorong Chuan MRT and New Tech Park.

Chuan Park Residences comprising a total of 900 units ranging from 1 to 5 bedroom layouts.

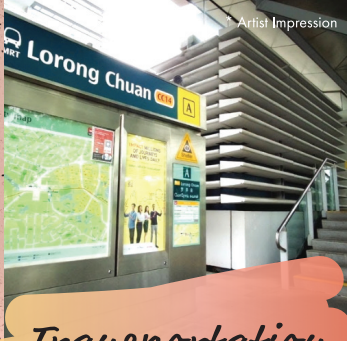
OVERVIEW



Connecting YOU TO ALL THE ESSENTIALS OF LIFE

For shopping and eating out, Chuan Park Residences residents will find themselves in close proximity to two major shopping malls: Nex and Junction 8. The first is a large mall with 340 stores, and it is integrated with the Serangoon MRT station and bus interchange. The second mall is a smaller heartland mall with about 174 stores, and is accessible by bus.

Disclaimer: All images and floor plans are for illustration purposes only, and are subject to final changes by the developer.



Transportation



Hawker Centres



Schools



Shopping

In its vicinity are hawker centres such as Serangoon Garden Market and Food Centre as well as neighbourhood cafes and bars.

Chuan Park Residences is located right beside Lorong Chuan MRT and about less than 10 mins walk to Serangoon Bus Interchange.

Schools in the area also include CHIJ Our Lady of Good Counsel, St Gabriel's primary and secondary schools, Raffles Girls' Secondary School, Nanyang Junior College, the Australian International School as well as several others.



* Artist Impression

At Chuan Park Residences, every day is a getaway when embraced with plenty of lifestyle facilities. Take a stroll at amazo valley; enjoy a mindful moment at zen garden; gather for a meal at dining by the woods; sweat it out at botanical outdoor fitness. Live life without stepping out of home.

EVERY *Arrival* IS A GRAND SETTING

Discover ALL THAT THE GARDENS HAVE TO OFFER



Break of dawn, rise and shine! Channel inner peace with a yoga session at the floating boardwalk or island lawn.



Make a splash at the free-form swimming pools or shave your timings at the 50-metre lap pool.



Too hot out for a jog round the gardens? Work out in air-conditioned comfort at the floating gym.



Nice weather for dinner outdoor? Take your pick of settings; the alfresco kitchen, the island bbq or the sky bbq.



* Artist Impression

Disclaimer: All images and floor plans are for illustration purposes only, and are subject to final changes by the developer.

GRAPED IN ELEGANCE, FURNISHED WITH *Style*



Underscored by efficient design and tasteful furnishing at Chuan Park Residences, thoughtfully-conceived interiors instantly make a house become a home. Create memorable family moments with a functional spatial layout and induce a lasting impression with quality home appliances and fittings.



* Artist Impression

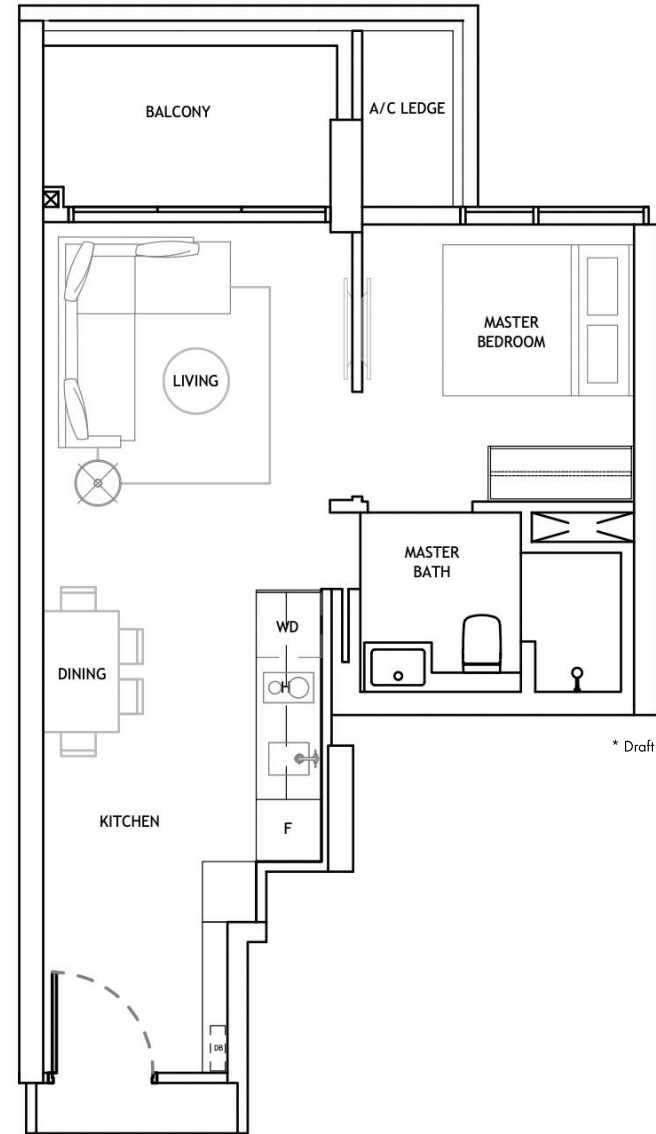


FLOOR PLAN

1 BEDROOM

TYPE A

- This Is Developer Tracked Record Floor Plan
(Take Reference From The Landmark
for Chuan Park Residences)

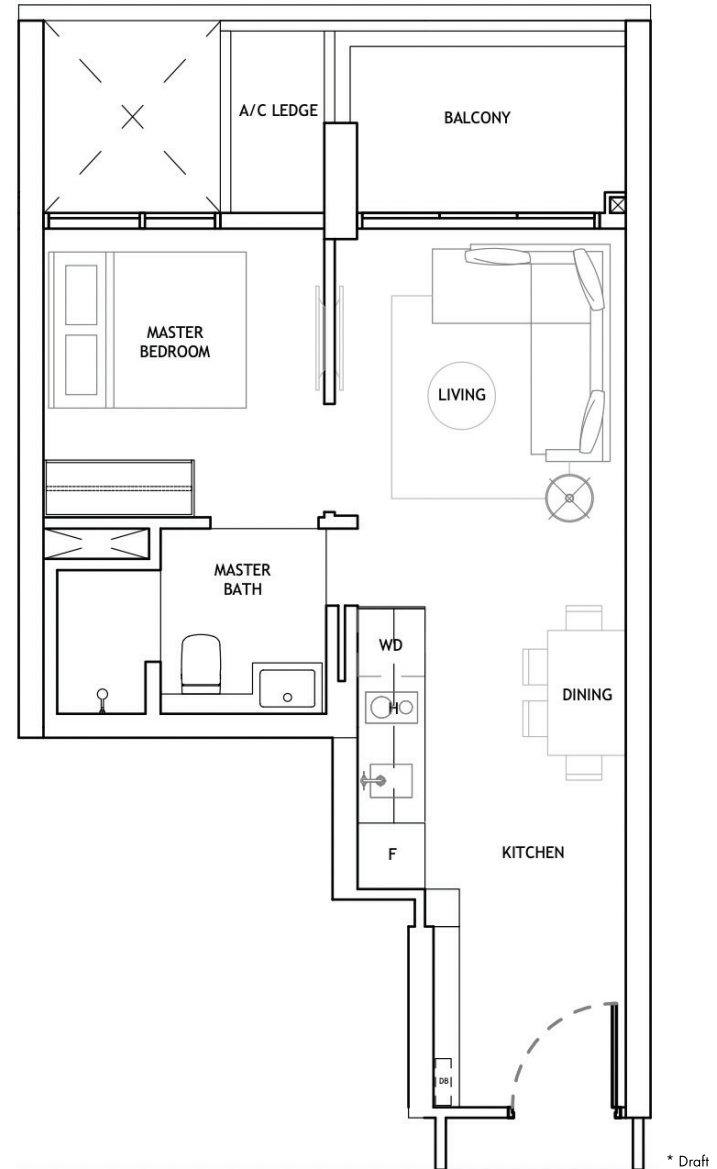


1 BEDROOM

TYPE B

- This Is Developer Tracked Record Floor Plan
(Take Reference From The Landmark
for Chuan Park Residences)

Disclaimer: All images and floor plans are for illustration purposes only, and are subject to final changes by the developer.



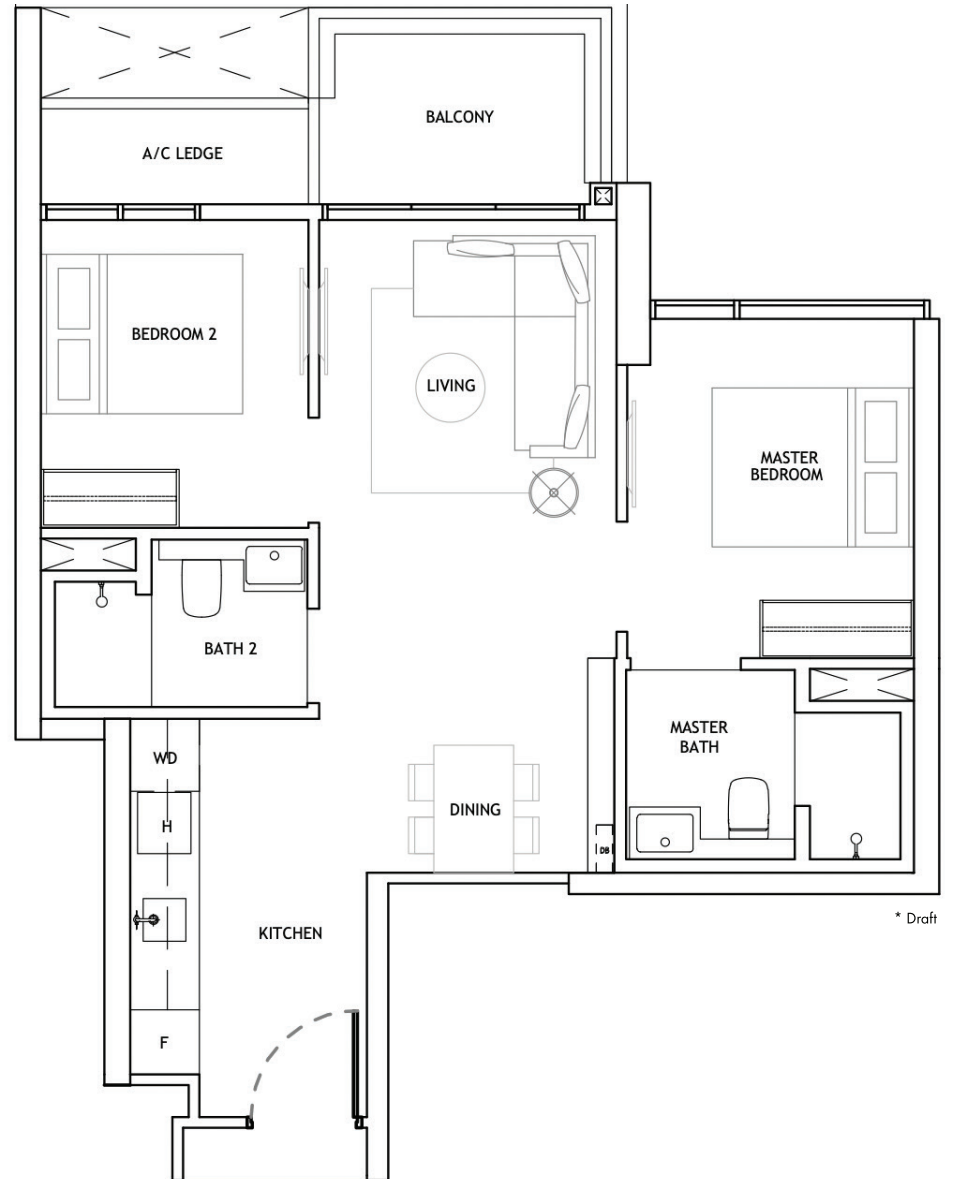
* Draft

2 BEDROOM

TYPE A

- This Is Developer Tracked Record Floor Plan
(Take Reference From The Landmark
for Chuan Park Residences)

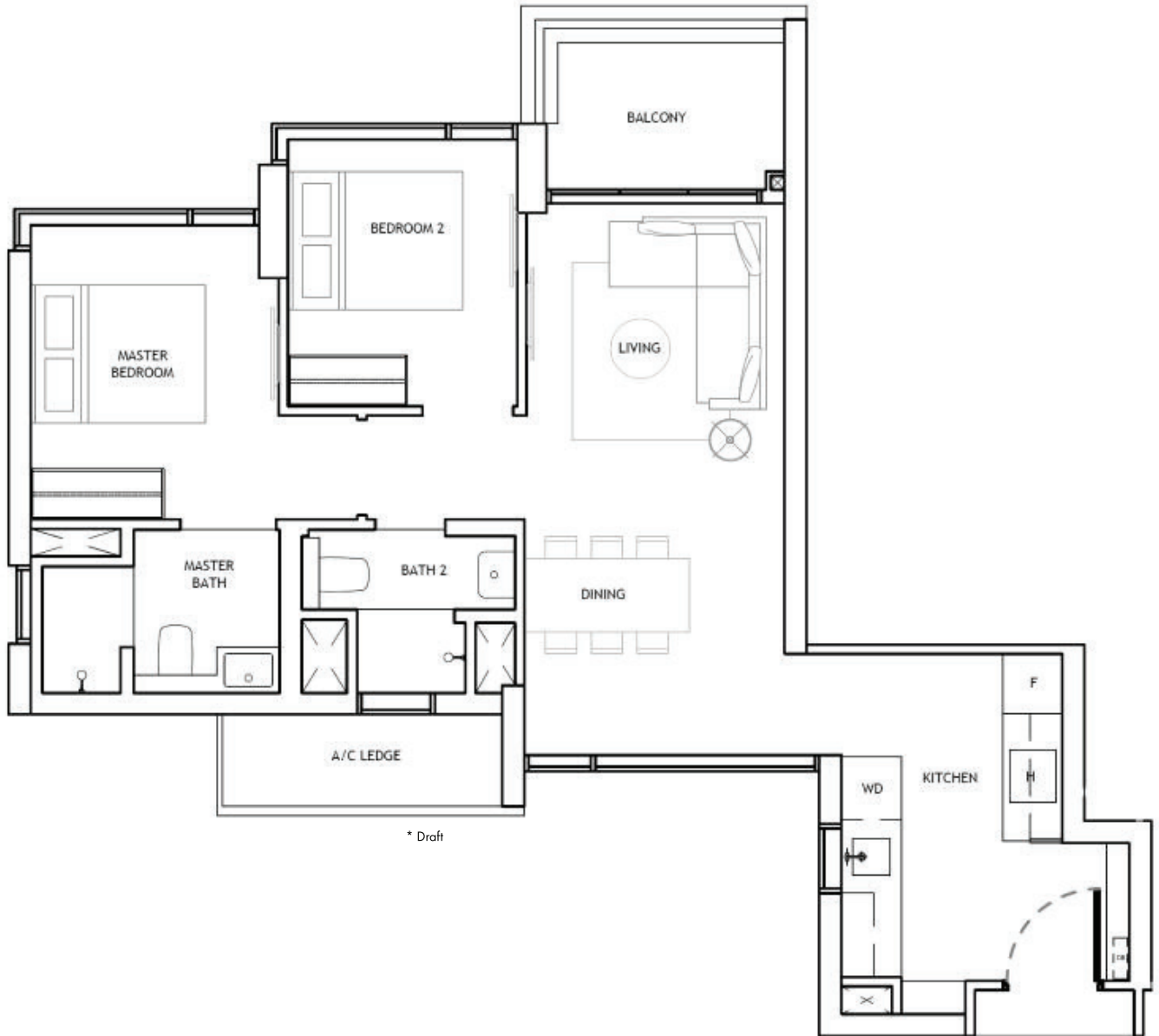
Disclaimer: All images and floor plans are for illustration purposes only, and are subject to final changes by the developer.



2 BEDROOM

TYPE B

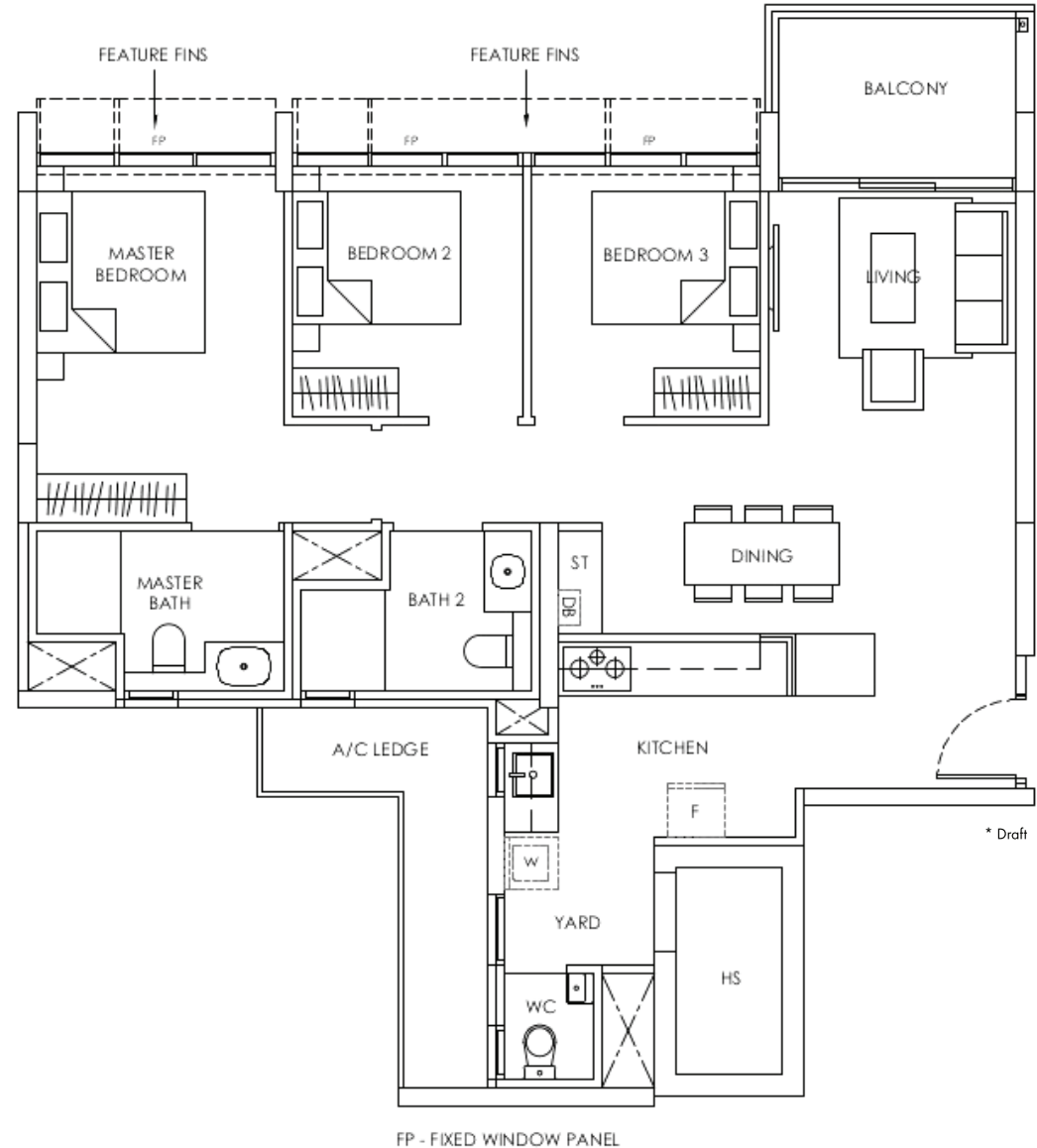
- This Is Developer Tracked Record Floor Plan (Take Reference From The Landmark for Chuan Park Residences)



3 BEDROOM TYPE A

- This Is Developer Tracked Record Floor Plan
(Take Reference From Provence Residence
for Chuan Park Residences)

Disclaimer: All images and floor plans are for illustration purposes only,
and are subject to final changes by the developer.



3 BEDROOM

Type B

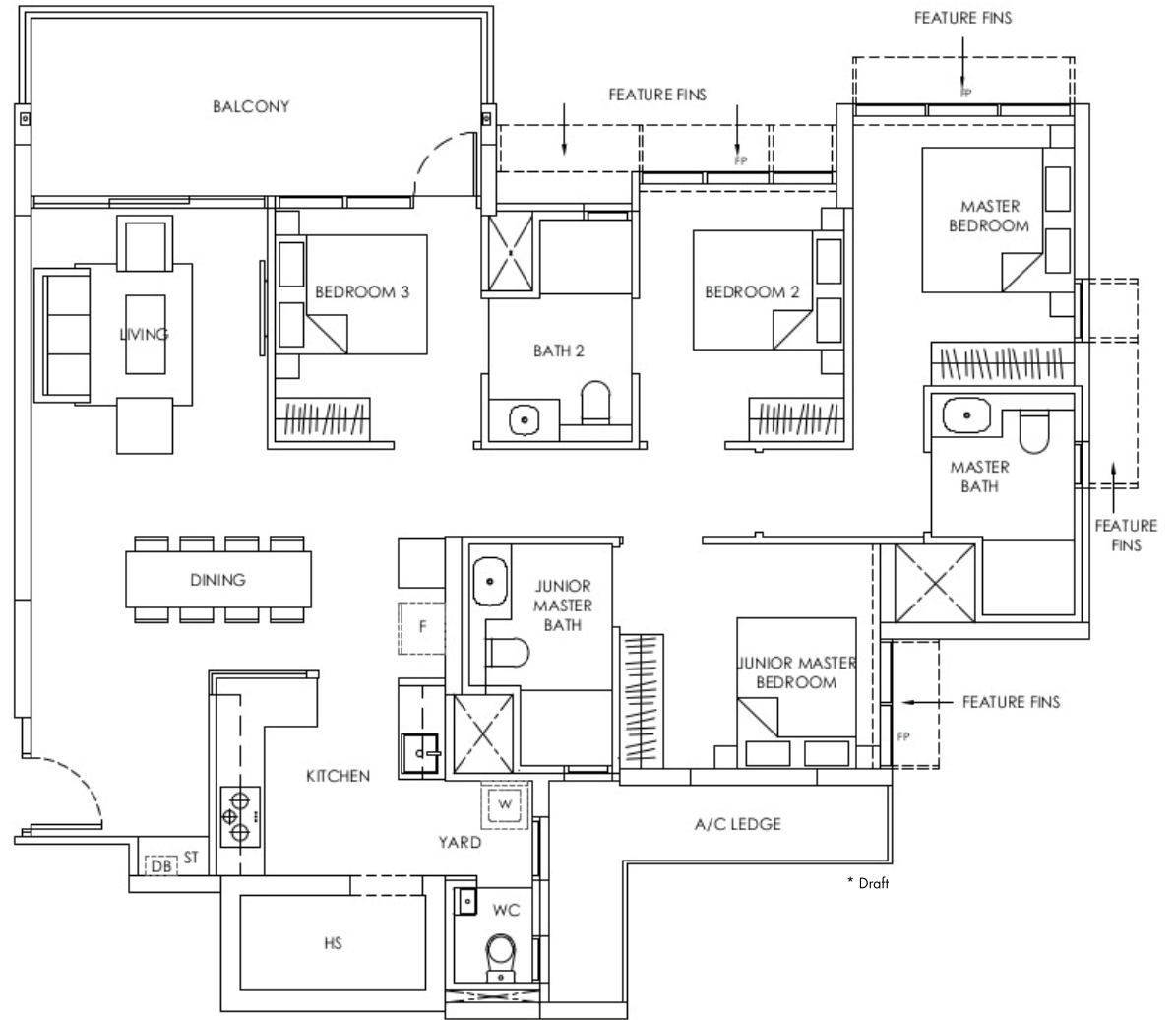
- This Is Developer Tracked Record Floor Plan (Take Reference From Provence Residence for Chuan Park Residences)



* Draft

4 BEDROOM

- This Is Developer Tracked Record Floor Plan (Take Reference From Provence Residence for Chuan Park Residences)



FP - FIXED WINDOW PANEL

* Draft

DEVELOPER
MCC Land & Kingsford

DEVELOPER'S LICENSE NO.
TBA

TENURE OF LAND
99 years leasehold

LOT NOS./MUKIM
TBA

EXPECTED DATE OF NOTICE OF VACANT POSSESSION
TBA

EXPECTED DATE OF LEGAL COMPLETION
TBA



MCC LAND (SINGAPORE) PTE LTD
中冶置業(新加坡)有限公司

Incorporated in 2010, MCC Land (Singapore) Limited has been actively involved in Singapore's real estate scene and achieved good results. It has developed five development projects, co-developed two development projects and managed five development projects. The company has been ranked Singapore's top 10 real estate developers for three consecutive years and won the "Asia's Top Influential Brands" award.

China Jingye Engineering Corporation Limited (Singapore Branch) is a registered contractor with the Building and Construction Authority of Singapore (BCA) and the only State-owned enterprise in Singapore to obtain the highest A1 grade in both General Building (CW01) and Civil Engineering (CW02) categories. The company is influential in Singapore with excellent performance in both public and private construction sectors. The company is the main contractor for Singapore's iconic landmark

projects - Universal Studios Singapore and Maritime Experiential Museum, Resorts World, Sentosa.

China Jingye Construction Engineering (Singapore) Private Limited has extensive experience in private civil engineering sector. As the general main contractor for MCC Land, it is responsible for most of its property development projects. The company has been part of MCC Singapore since its inception in 1996. It has accumulated comprehensive engineering performance and experiences in turnkey, specialised contracting, supply and subcontracting works.

Established in 2012 as MCC Singapore's gateway to Southeast Asia, MCC Bina Sdn Bhd undertakes large-scale projects in Malaysia.

Developed by:



Kingsford Development was incorporated in 2011 by China-based Kingsford Group. Since entering the real estate industry in 2000, the Kingsford Group has developed a number of commercial and residential projects in China. In 2012, Kingsford Development commenced property development in Singapore with Kingsford Hillview Peak, a 512-unit condominium at Hillview Avenue. It then went on

to develop Kingsford Waterbay, a mixed-use development at Upper Serangoon View comprising a 1,165-unit condominium and retail shops. Kingsford Development won the Singapore Prestige Brand Award - Global Brands in 2019.

DISCLAIMER

While every reasonable care has been taken in preparing this brochure and in constructing the models and showflats, the developer and the marketing agent cannot be held responsible for any inaccuracies or omissions. Visual representations, models, showflat displays and illustrations, photographs, art renderings and other graphic representations and references are intended to portray only artistic impressions of the development and cannot be regarded as representation of fact. Floor areas are approximate measurements and subject to final survey. The property is subject to inspection by the relevant authorities to comply with the current codes of practice. All information, specifications, renderings, visual representations and plans are current at the time of publication and are subject to change as may be required by us and/or the competent authorities and shall not be regarded as statements or representations of facts. All plans are subject to amendments as directed and/or approved by the building authorities. All areas are approximate measurements only and subject to final survey. The Sales and Purchase Agreement shall form the entire agreement between us, the Developer and the Purchaser and shall supersede all statements, representations or promises made prior to the signing of the Sale and Purchase Agreement and shall in no way be modified by any statements, representations or promises made by us or the Marketing Agent.